

## HƯỚNG DẪN CÀI ĐẶT DOTNETNUKE 4.9

Viết bởi: **Lê Văn Quân**

Email: **levanquanna@yahoo.com, nguyendansoft@gmail.com**

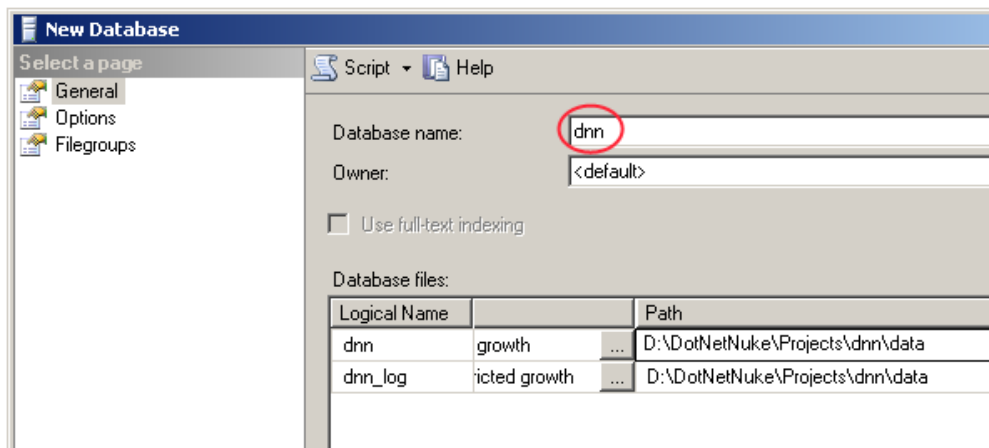
Mobile phone: **01689 227 100**

### A. Chuẩn bị công cụ

1. Vào trang <http://dotnetnuke.com>, tải bản DNN install 4.9 (DotNetNuke\_Community\_04.09.04\_Install.zip) về máy.
2. Cài đặt SQL 2000(hoặc SQL 2005), trong tài liệu này lấy ví dụ là SQL 2005(SQL 2000 cũng tương tự)
3. Cài đặt webserver IIS

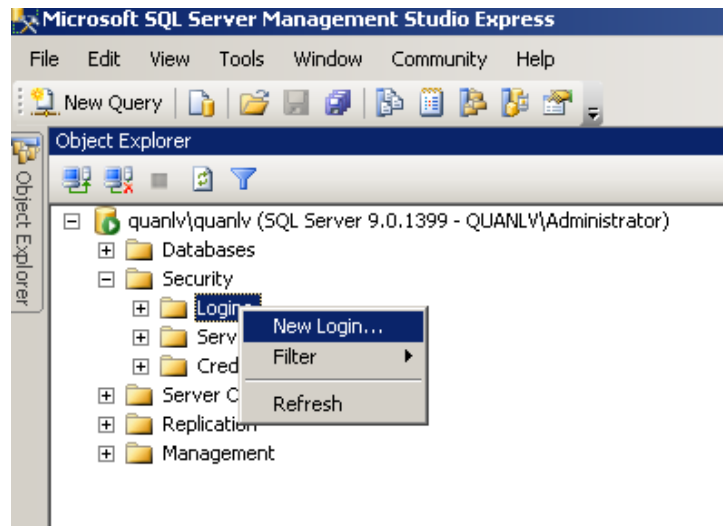
### B. Thiết lập hạ tầng

1. Tạo một thư mục chứa Source code và giải nén tệp DotNetNuke\_Community\_04.09.04\_Install.zip vào thư mục thư mục đó, chẳng hạn: **D:\DotNetNuke\Projects\dnn\source**
2. Tạo thư mục chứa DataBase(mục đích là thuận tiện cho việc sao lưu phục hồi, tránh mất mát), ví dụ: **D:\DotNetNuke\Projects\dnn\data**.
3. Tạo DataBase:

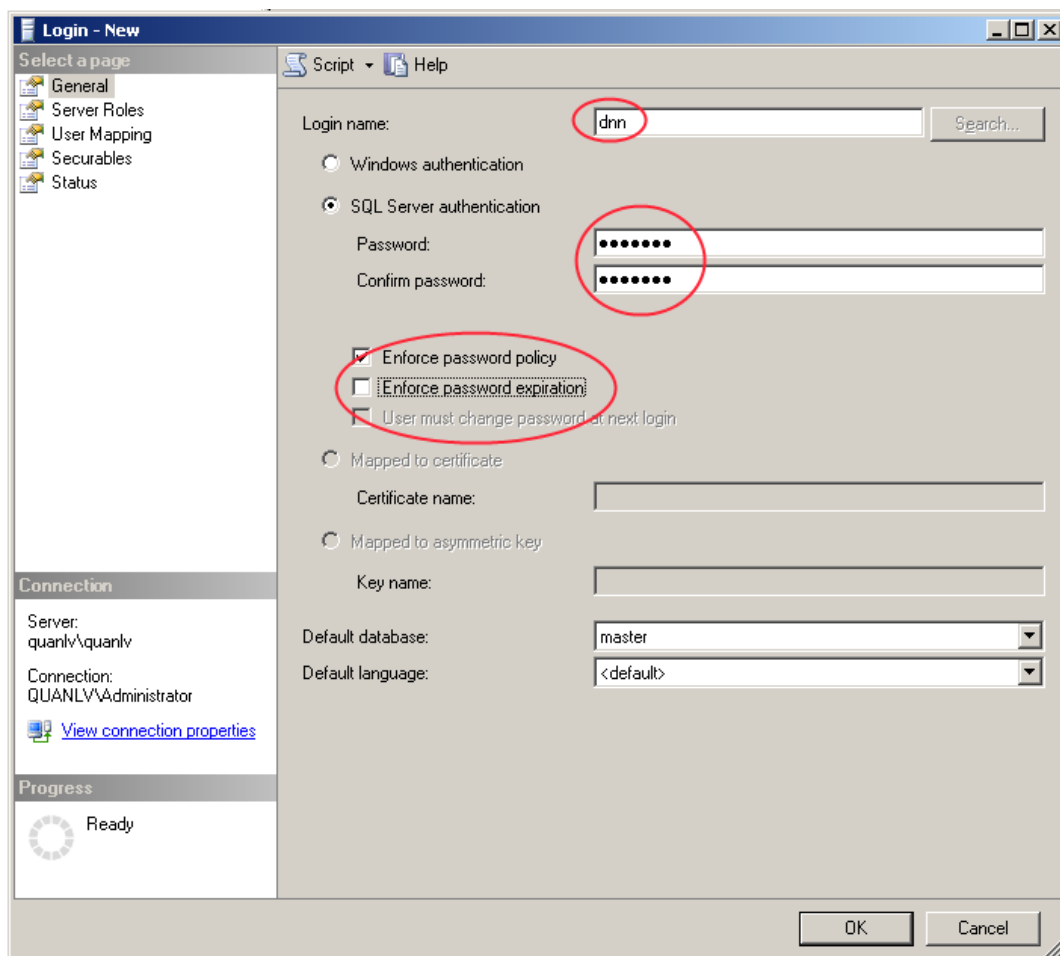


- Tên DB là **dnn**
- Thư mục chứa file vật lý(là thư mục đã tạo tại mục 3):  
**D:\DotNetNuke\Projects\dnn\data**

4. Tạo user login cho DB vừa tạo ở trên:

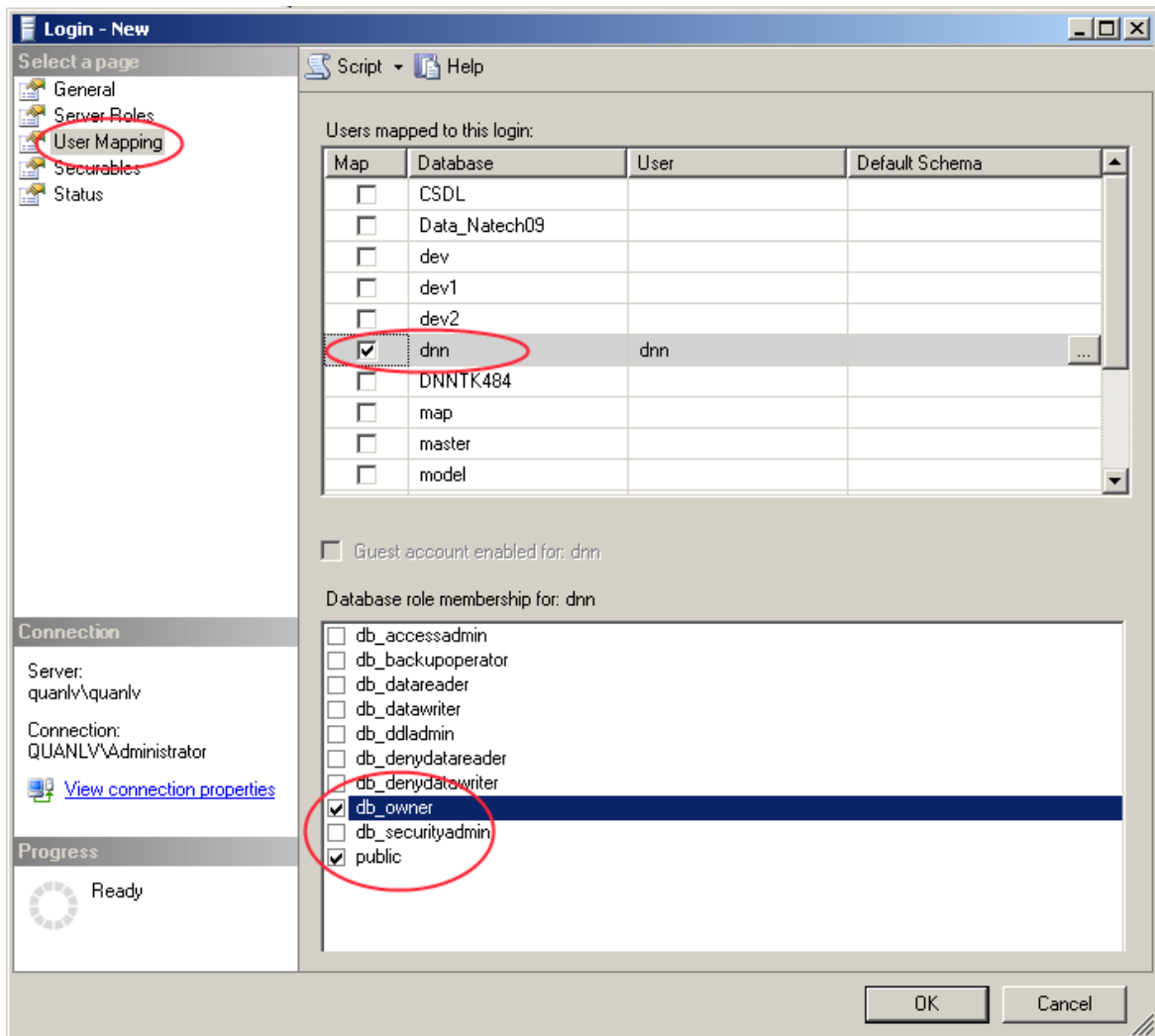


Mở node **Security/Login**, nháy chuột phải chọn **New Login**, xuất hiện hộp thoại:



Nhập tên Login là **dnn**, pass: **1234567**

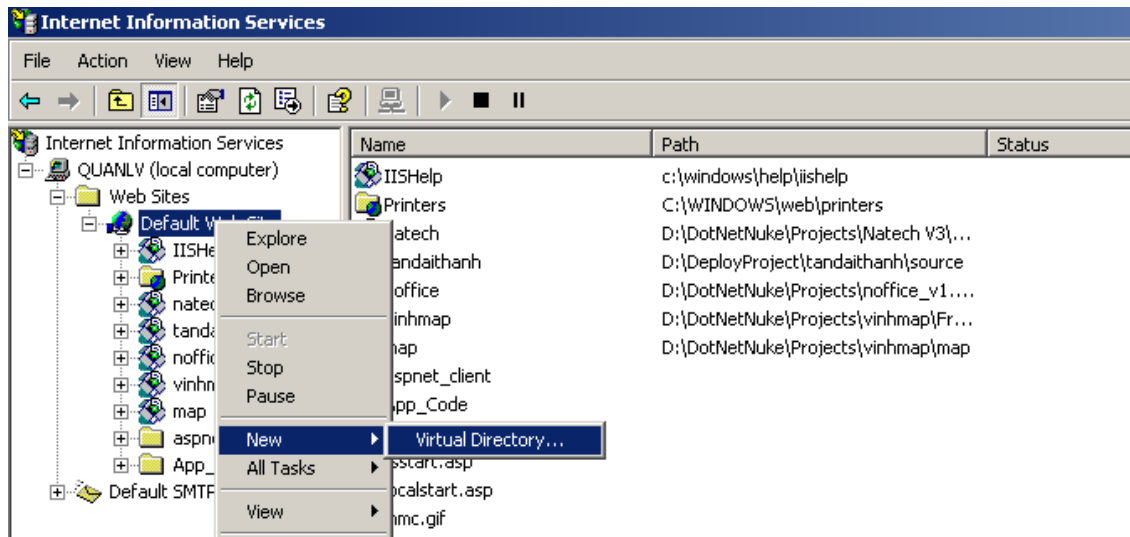
Mở tab **UserMapping** và chọn như hình dưới đây:



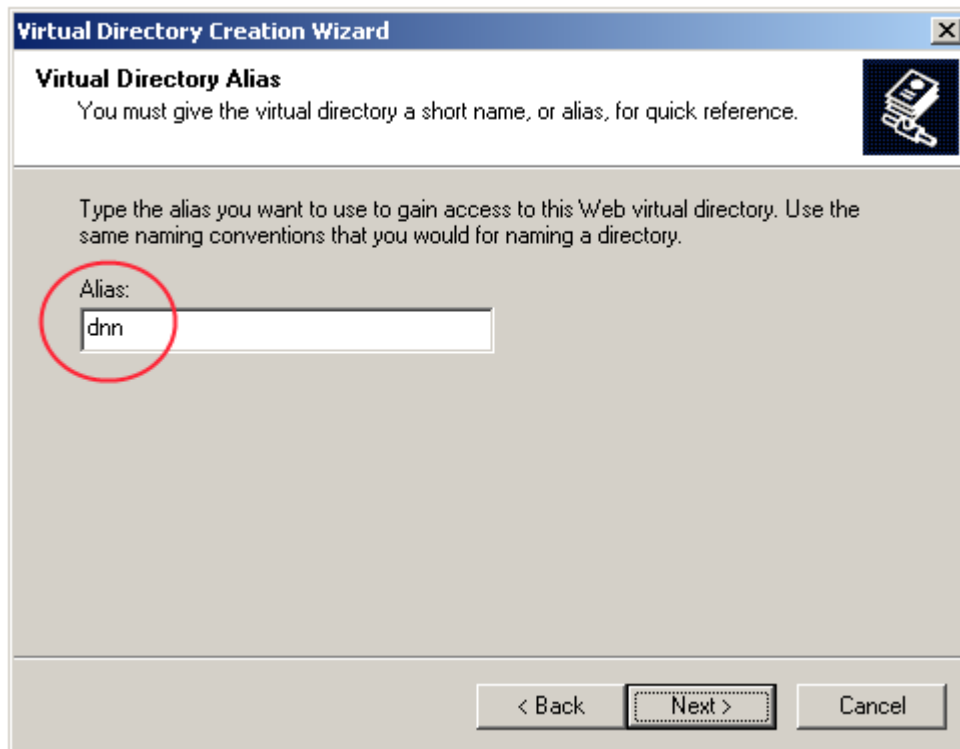
Nhấn **OK** để hoàn tất

## 5. Tạo Virtual Directory

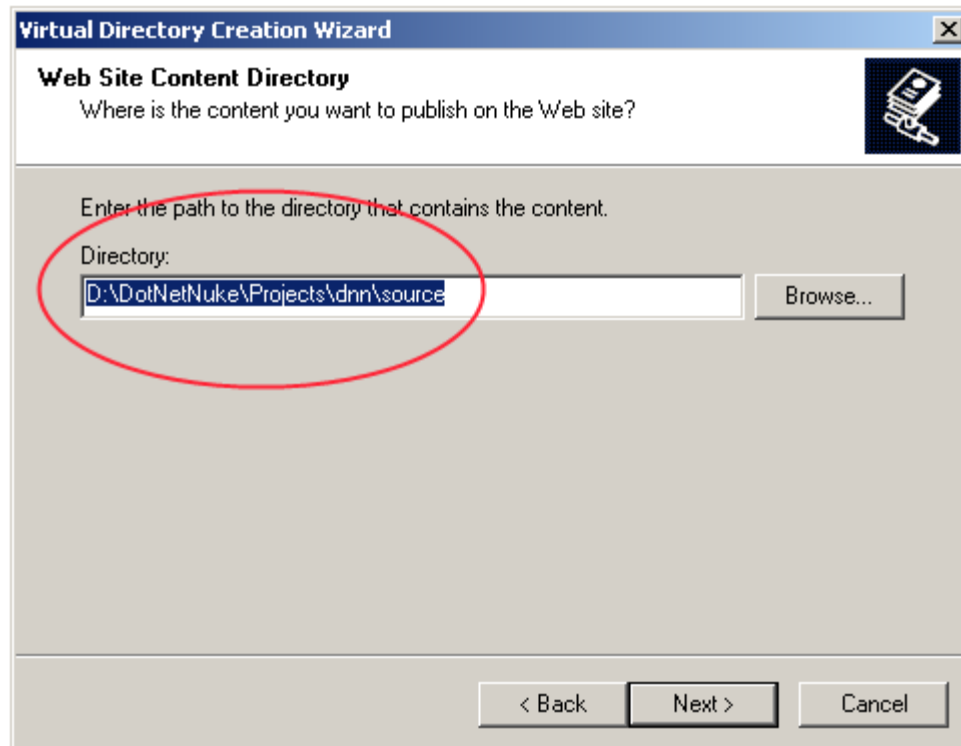
Mở IIS, mở node **Default Website**



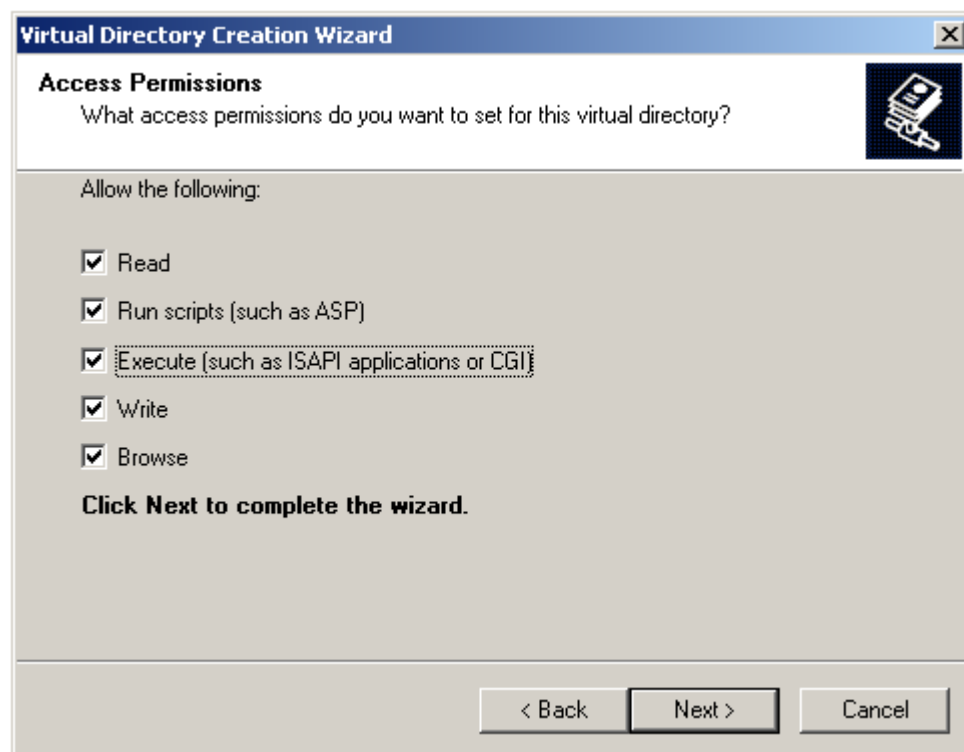
Nháy chuột phải chọn **New/Virtual Directory ...** xuất hiện hộp thoại chọn **Next**, xuất hiện hộp thoại:



Nhập Alias là **dnn**, chọn **Next**

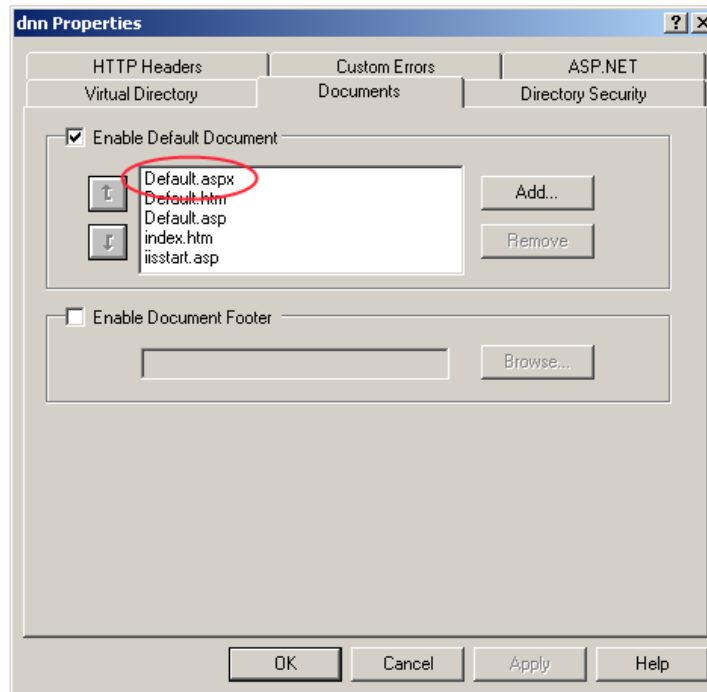


Nhập Directory là đường dẫn chứa Source code đã tạo tại mục 1, chọn **Next**

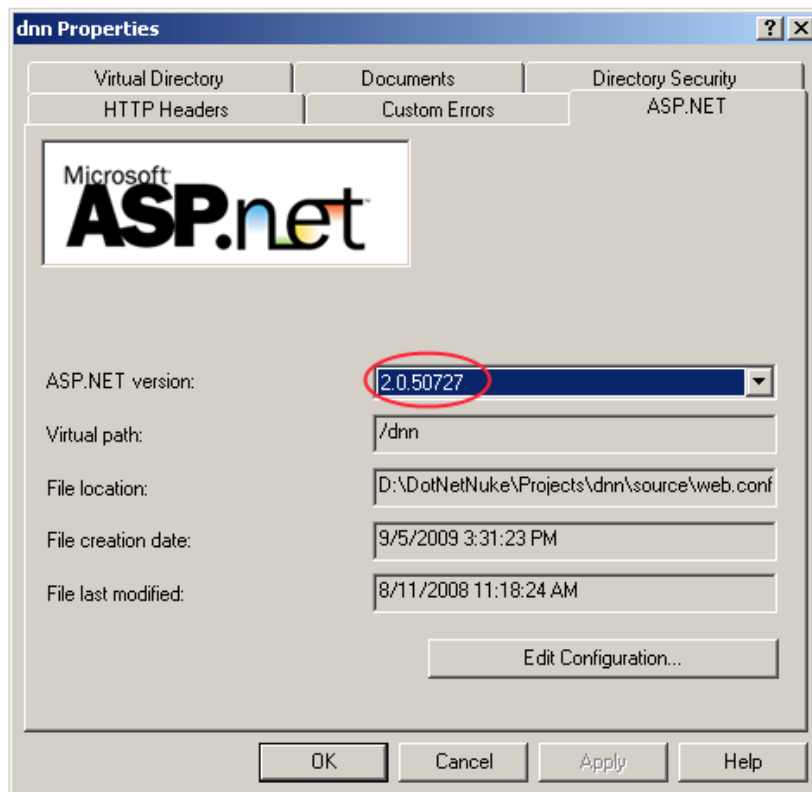


Chọn **Next** cho đến khi Finish

6. Đảm bảo là file mặc định của website như sau:




7. Đảm bảo là version của ASP.NET là 2.0 trở lên



## C. Bắt đầu cài đặt

1. Mở trình duyệt gõ vào địa chỉ: <http://localhost/dnn> xuất hiện màn hình cài đặt:



**DotNetNuke Installation Wizard - Version 04.09.00**

Welcome to the DotNetNuke Installation Wizard. This wizard will guide you through the installation of your DotNetNuke Application.

You may navigate through the Wizard using the Next and Previous buttons. On some pages you will see a third button "Test ...". This button will allow you to test the configuration before you continue, to see the effects of changes.


The first step is to select the installation method to use and to choose the language you would like to use for the Installation.

---


**Select Installation Method:**

- ☐ **Custom** - The "Custom" installation method provides you with the ability to completely customise your DotNetNuke installation. Select this option if you wish to control which optional components get installed.
- ☒ **Typical** - The "Typical" installation method makes some "typical" choices for you.
- ☐ **Auto** - The "Auto" installation method bypasses the Wizard completely and uses the legacy Auto-Install procedure.

**Choose Language:**



Nhấn **Next** xuất hiện màn hình:



**Checking File Permissions**




DotNetNuke has extensive file upload capabilities for content, modules, and skins. These features require custom security settings so that the application is able to create and remove files in your website.

This page checks the current file permissions to ensure that these features will work correctly.

---

**File Permissions Summary:**

- Create Folder ☐
- Create File ☐
- Delete File ☐
- Delete Folder ☐

Nhấn **Next** xuất hiện màn hình, nhập các thông tin như sau:



## Configure Database Connection

You can configure the database settings used by DotNetNuke on this page. If you are installing DotNetNuke in a "Hosting Account" your hosting provider should have provided you with the information.

There are two options for SQL Server 2005. SQLServer 2005 supports the use of Database Files. In most situations you should choose the Database option, but if you are using SQL Server 2005 Express then you should use the File option.

**Select Database:** ☐ SQL Server 2005 (Express) File ☒ SQL Server 2000/2005 Database

**Server:**  Enter the Name or IP Address of the computer where the Database is located. (if using Oracle enter the Data Source (SID))

**Database:**  Enter the Database name

**Integrated Security:** ☐ Check this if you are using SQL Server's Integrated Security, which means you will be using your Windows account to access SQL Server. If you are using SQL Server Express then you will most likely need to check this option. If you have been given a UserId/Password to access your Database, leave this unchecked, and provide the UserId/Password combination.

**User ID:**  Enter the UserID for the Database

**Password:**  Enter the Password for the Database

**Run as db Owner:** ☒ Check this if you are running the database as Database Owner - if left unchecked you will be running as the User ID specified

**Object Qualifier:**  Enter an optional "prefix" to use for all your database objects - this helps ensure that there are no object name clashes.

 **Test Database Connection**

 **Previous**

 **Next**

Nhấn **Next** xuất hiện màn hình cài đặt CSDL cho hệ thống(tự động):



## Run Database Installation Scripts

The installation of the database scripts should have started when this page loaded. The Next button will be disabled until the Installation of the Scripts is complete.

Installing Database Scripts ... 

```
Installing Database - Version 4.4.0...Success
Upgrading Database to Version 4.4.1...Success
Upgrading Database to Version 4.5.0...Success
Upgrading Database to Version 4.5.1...Success
Upgrading Database to Version 4.5.2...Success
Upgrading Database to Version 4.5.3...Success
Upgrading Database to Version 4.5.4...Success
Upgrading Database to Version 4.5.5...Success
Upgrading Database to Version 4.6.0...Success
Upgrading Database to Version 4.6.1...Success
Upgrading Database to Version 4.6.2...Success
Upgrading Database to Version 4.7.0...Success
Upgrading Database to Version 4.8.0...Success
Upgrading Database to Version 4.8.1...
```

 **Next**



Sau khi hệ thống hoàn thành công việc này thì nhấn **Next** để chuyển sang màn hình thiết lập tài khoản host:



### Configure Host User

In this page you should provide the information for the Host or SuperUser User Account. This user has access to all portals created on the site, and care should be taken to provide a UserName/Password combination that is difficult to "hack" by malicious users.

<b>First Name:</b>	<input type="text" value="quan"/>
<b>Last Name:</b>	<input type="text" value="lv"/>
<b>User Name:</b>	<input type="text" value="quanlv"/>
<b>Password:</b>	<input type="password" value="••••••"/>
<b>Confirm Password:</b>	<input type="password" value="••••••"/>
<b>Email Address:</b>	<input type="text" value="levanquanna@yahoo.com"/>



Nhấn **Next** để chuyển sang màn hình thiết lập tài khoản Admin:



### Portal Title:

In this page you will configure the Host (or initial) Portal (website).

You will need to provide an administrator user account. This user has access to all functionality of the portal, and as with the Host User care should be taken to provide a UserName/Password combination that is difficult to "hack" by malicious users.

### Portal Administrator

First Name:	<input type="text" value="quan"/>
Last Name:	<input type="text" value="lv"/>
User Name:	<input type="text" value="admin"/>
Password:	<input type="password" value="••••••"/>
Confirm Password:	<input type="password" value="••••••"/>
Email Address:	<input type="text" value="levanquanna@yahoo.com"/>

### Portal Properties

Portal Title:	<input type="text" value="nguyendan 's portal"/>
Template:	<input type="text" value="DotNetNuke"/>

[← Previous](#)[Next →](#)

Nhấn **Next** xuất hiện màn hình chúc mừng cài đặt thành công:



### Congratulations

Congratulations, you have successfully installed DotNetNuke.

[→ Finished \(Goto Site\)](#)

Nhấn **Finished** để kết thúc quá trình cài đặt và chuyển về trang chủ, có thể sử dụng 1 trong 2 tài khoản đã thiết lập ở trên để đăng nhập vào hệ thống.